

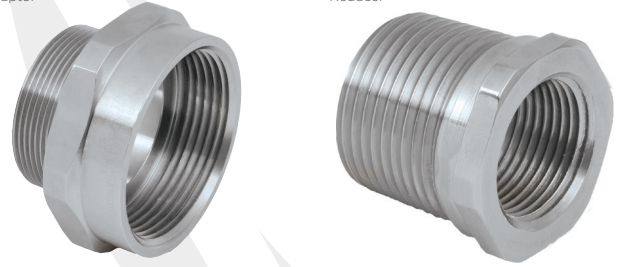
737

737 ADAPTORS & REDUCERS, GLOBALLY APPROVED, EXPLOSIVE ATMOSPHERE CABLE / CONDUIT ACCESSORY

- Used for thread conversion
- Wide range of thread types and sizes
- General purpose / industrial version available
- Equipment interface o-ring seal available
- -60°C to +200°C (metallic versions)
- Reducers Globally marked:
 - IECEx, ATEX, UL and cCSAus, UKEX
- Adaptors Globally marked:
 - Up to 2 steps up in size: IECEx, ATEX, UKEX, cCSAus

Adaptor

Reducer



+200°C
↑
-60°C

Ex db Ex eb Ex ta

TECHNICAL CLASSIFICATION

DESIGN SPECIFICATION	BS 6121:Part 1:1989
ENCLOSURE PROTECTION	IK10 to IEC 62262 (20 joules) Brass and Stainless Steel Only
INGRESS PROTECTION RATING**	IP66, IP67 and IP68***
AVAILABLE MATERIALS	Electroless Nickel Plated Brass, Brass, Nylon, Stainless Steel, Aluminium
CONTINUOUS OPERATING TEMPERATURE	-60°C to +200°C (Metallic), -20°C to +60°C (Nylon)

** When CMP installation accessories are used. Refer to www.cmp-products.com for further information. *** IP68 tested to a minimum depth of 30 metres for 12 hours, alternative depths / durations can be provided upon request

HOW TO ORDER

e.g. 737-D-M-2-M-3-4 = Dual certified Ex d & Ex e – M20 (M) x M25 (F) - Stainless Steel

Please refer to Ordering Guide Tables for reference definitions, denoting material variants. When ordering please notify CMP Products in your order if alternative approval markings are required.

When ordering Adaptors & Reducers always state the Male Thread size first.

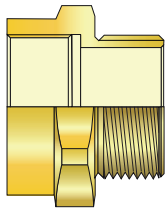
Other thread variations are available on request. For further information on ordering please refer to www.cmp-products.com.

It should be noted that when using CMP Type 737 Thread Conversion Adaptors and Reducers in association with Explosion Protected electrical equipment the following basic rules must be observed in line with good engineering practice:

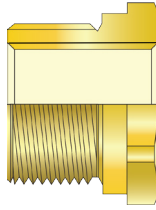
For direct entry Ex d applications, only adaptor or reducer should be used per cable entry.

The female connection thread of a Thread Conversion Adaptor shall "step" not more than two "size" up in the case of a thread gender change. Example; M20 (M) to M32 (F) or M20 (M) to 1" NPT (F) is permitted. Whereas M20 (M) to M40 (F) or M20 (M) to 1½" NPT (F) is not permitted.

CMP 737 Adaptor



CMP 737 Reducer



GLOBAL PRODUCT CERTIFICATION

ATEX CERTIFICATE	CML18ATEX1320X	IECEx CERTIFICATE	IECEx CML18.0177X, IECEx SIM 15.0002X
UKEX CERTIFICATE	CML 21UKEX1238X	CODE OF PROTECTION	Ex db I Mb, Ex eb I Mb, Ex db IIC Gb, Ex eb IIC Gb, Ex ta IIC Da (Ex eb IIC Gb, Ex ta IIC Da only on nylon version)
CODE OF PROTECTION	⊕ II 2G 1D Ex db IIC Gb, Ex eb IIC Gb, Ex ta IIC Da ⊕ I M2 Ex db I Mb, Ex eb I Mb ⊕ II 2G 1D Ex eb IIC Gb, Ex ta IIC Da only on Nylon version)	COMPLIANCE STANDARDS	IEC 60079-0,1,7,31
COMPLIANCE STANDARDS	EN 60079-0,1,7,31	UL CERTIFICATE	UL 1203 (Reducers with NPT or Metric Threads only)
cCSAus CERTIFICATE (16 - 100)	1055233	CODE OF PROTECTION	Class I Groups A,B,C,D; Class II Groups E, F and G; Class III, Ex d e II, Class I, Zone 1, AEx d e II; (Not available in Nylon)
CODE OF PROTECTION	Class I, Groups A, B, C and D; IP66, 67, 68; Enclosure Type 4X; Class II Groups E, F and G; Class III, Ex d e II, Class I, Zone 1, AEx d e II; (Not available in Nylon)	COMPLIANCE STANDARDS	UL 1203
COMPLIANCE STANDARDS	C22.2 No. 30, 94, CAN/CSA 60079-0,1,7, CAN-CSA 61241-1-1, UL50 Edition 11, UL1203 Edition 4, UL 60079-0,1,7	EAC CERTIFICATE	RU C-GB, A, D, 07, B. 02500/20
EAC CERTIFICATE	RU C-GB, A, D, 07, B. 02500/20	UKrSEPRO CERTIFICATE	CL 19.0372X
RETIE APPROVAL NUMBER	EL-CS-220061	CCOE / PESO (INDIA) CERTIFICATE	P548696, P533772
CCC CERTIFICATE	2020322313003177	INMETRO APPROVAL	TÜV 12.1332X
KCS CERTIFICATE	14-GA4B0-0249X	GOST R INDUSTRIAL CERTIFICATE	04ИДН0101.GB.CO2492 (applies to non-explosive atmosphere product only)
GOST R INDUSTRIAL CERTIFICATE	04ИДН0101.GB.CO2492 (applies to non-explosive atmosphere product only)	UAE ECAS-Ex CERTIFICATE	24-03-106290/E24-03-110155/NB0007
SANS	IA MS-XPL21804.21.0006X	MARINE APPROVALS	BV: 43180 BV, ABS: 22-2230864-PDA

737

DIMENSION DATA TABLES

- 1 - Select male thread from the left hand column of Table 'A'
- 2 - Select the female thread size from the top of Table 'A', referenced 'A**' for Adaptor and 'R**' for Reducer
- 3 - Using this code reference, please refer to the corresponding dimensions in Table 'B'

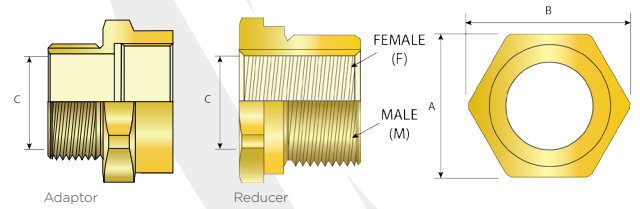


TABLE A - FEMALE THREAD SIZE																				
	METRIC										NPT									
	M16	M20	M25	M32	M40	M50	M63	M75	M90	M100	1/2"	3/4"	1"	1 1/4"	1 1/2"	2"	2 1/2"	3"	3 1/2"	4"
M16	A01	A04	A08								A03	A08								
M20	R01	A05	A07	A12							A05	A11	A15							
M25	R05	R03	A09	A14	A18						R03	A09	A16	A18						
M32	R06	R06	R06	A17	A19	A24					R06	R06	A17	A19	A24					
M40	R08	R08	R08	R08	A20	A29	A33				R08	R08	R08	A21	A25	A33				
M50	R10	R10	R10	R10	R10	A28	A35	A49			R11	R11	R10	R10	A27	A32	A42	A52		
M63		R12	R12	R12	R12	R12	A37	A48	A53		R12	R12	R12	R12	R12	A37	A44	A53		
M75		R14	R14	R14	R14	R16	R15	A47	A55	A57		R14	R14	R14	R14	R14	A46	A55	A61	
M90					R19	R19	R17	R19		A60								R18		
M100							R20	R20	R20											A58
1/2"	R02	A06	A07	A12							A02	A10	A15							
3/4"	R04	R04	A09	A16	A22						R04	A09	A16	A18						
1"	R07	R07	R07	A13	A19						R07	R07	A17	A19	A24					
1 1/4"	R09	R09	R09	R09	A20	A23					R09	R09	R09	A20	A25	A30				
1 1/2"		R10	R10	R10	R11	A26	A34				R10	R10	R10	R10	A26	A31	A41			
2"		R12	R12	R12	R12	R12	A36	A43			R12	R12	R12	R12	R12		A39	A50		
2 1/2"		R14	R14	R14	R14	R13	R13	A40			R14	R14	R14	R14	R14	R14	A45	A54		
3"		R17	R19	R19		R18	R19	R19	A56		R17		R18	R18	R18	R18	R19	A51	A59	A62
3 1/2"				R17		R20	R20	R20	R20				R20	R20	R20	R20	R20	R20		
4"						R21	R21	R21						R21	R21	R21	R21	R21	R21	

TABLE B - REDUCERS		
TABLE A REF.	ACROSS FLATS 'A'	ACROSS CORNERS 'B'
R01	24.0	26.4
R02	27.0	29.7
R03	30.0	33.0
R04	31.5	34.7
R05	31.5	34.7
R06	37.6	41.4
R07	41.0	45.1
R08	46.0	50.6
R09	50.0	55.0
R10	55.0	60.5
R11	60.0	66.0
R12	70.0	77.0
R13	79.0	86.9
R14	80.0	88.0
R15	84.0	92.4
R16	90.2	99.2
R17	95.0	104.5
R18	98.8	108.7
R19	100.0	110.0
R20	110.0	121.0
R21	123.0	135.3
R22	127.0	139.7

TABLE B - ADAPTORS			
TABLE A REF.	ACROSS FLATS 'A'	ACROSS CORNERS 'B'	MINIMUM BORE 'C'
A01	22.0	24.2	9.7
A02	24.0	26.4	14.0
A03	24.0	26.4	9.7
A04	24.0	26.4	10.0
A05	24.0	26.4	14.0
A06	27.0	29.7	14.0
A07	30.0	33.0	14.0
A08	30.0	33.0	9.7
A09	30.0	33.0	20.0
A10	30.5	33.6	14.0
A11	31.5	34.7	14.0
A12	36.0	39.6	14.0
A13	36.0	39.6	26.0
A14	37.6	41.4	20.0
A15	41.0	45.1	14.0
A16	41.0	45.1	20.0
A17	41.0	45.1	26.0
A18	46.0	50.6	20.0
A19	46.0	50.6	26.0
A20	46.0	50.6	32.1
A21	50.0	55.0	32.0
A22	50.0	55.0	20.0

TABLE B - ADAPTORS			
TABLE A REF.	ACROSS FLATS 'A'	ACROSS CORNERS 'B'	MINIMUM BORE 'C'
A23	55.0	60.5	32.1
A24	55.0	60.5	26.0
A25	55.0	60.5	32.0
A26	55.0	60.5	38.0
A27	55.0	60.5	43.6
A28	59.8	65.8	44.2
A29	60.0	66.0	32.1
A30	65.0	71.5	32.0
A31	65.0	71.5	38.0
A32	65.0	71.5	44.2
A33	70.0	77.0	32.0
A34	70.0	77.0	38.0
A35	70.0	77.0	44.2
A36	70.0	77.0	49.0
A37	70.0	77.0	53.0
A38	70.0	77.0	32.1
A39	79.0	86.9	49.0
A40	79.0	86.9	60.0
A41	80.0	88.0	38.0
A42	80.0	88.0	44.2
A43	80.0	88.0	49.0
A44	80.0	88.0	55.0

TABLE B - ADAPTORS			
TABLE A REF.	ACROSS FLATS 'A'	ACROSS CORNERS 'B'	MINIMUM BORE 'C'
A45	80.0	88.0	60.5
A46	80.0	88.0	65.0
A47	84.0	92.4	68.0
A48	90.2	99.2	53.0
A49	90.2	99.2	42.0
A50	95.0	104.5	49.0
A51	95.0	104.5	75.0
A52	100.0	110.0	44.2
A53	100.0	110.0	55.0
A54	100.0	110.0	60.5
A55	100.0	110.0	64.8
A56	100.0	110.0	75.0
A57	110.0	121.0	61.0
A58	110.0	121.0	75.0
A59	110.0	121.0	75.0
A60	110.0	121.0	79.3
A61	110.0	121.0	68.3
A62	117.5	129.3	75.0

Additional sizes available upon request. Minimum reducer bore determined by female thread. Dimensions displayed in millimeters.

Dimensions listed are for metric cable glands only. Dimensions for alternative threads may vary, please see supplementary technical data sheet.

