

777

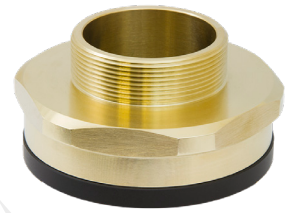
777 INSULATED ADAPTOR, GLOBALLY APPROVED, EXPLOSIVE ATMOSPHERE CABLE / CONDUIT ACCESSORY

- Isolates metallic cable glands from equipment
- Essential in areas of high electromagnetic noise
- Particularly relevant in power plants
- General purpose / industrial version available
- Can be supplied with thread conversion
- -60°C to +130°C
- Globally marked, cCSAus, IECEx, ATEX and UKEX

Type A



Type B



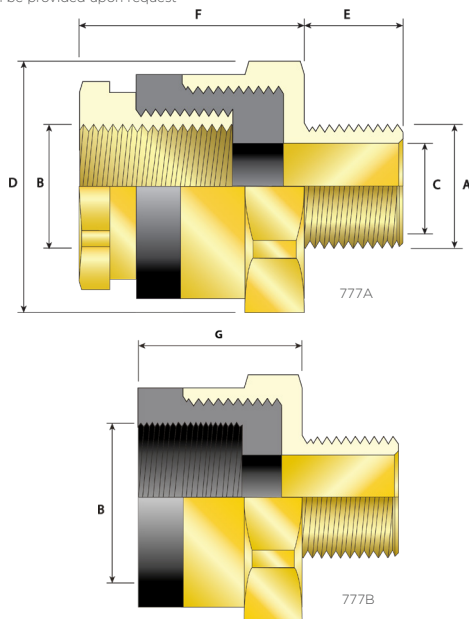
+130°C
↑
-60°C

Ex db Ex eb Ex ta

TECHNICAL CLASSIFICATION

DESIGN SPECIFICATION	BS 6121:Part 1:1989
ENCLOSURE PROTECTION	IK10 to IEC 62262 (20 joules) Brass and Stainless Steel Only
INGRESS PROTECTION RATING**	IP66, IP67 and IP68***
AVAILABLE MATERIALS	Brass, Electroless Nickel Plated Brass, Aluminium, Stainless Steel

** When CMP installation accessories are used. Refer to www.cmp-products.com for further information. *** IP68 tested to a minimum depth of 30 metres for 12 hours, alternative depths / durations can be provided upon request



GLOBAL PRODUCT CERTIFICATION

ATEX CERTIFICATE	CML18ATEX1328U	IECEx CERTIFICATE	IECEx CML 18.0185U
UKEX CERTIFICATE	CML 21UKEX1239U	CODE OF PROTECTION	Ex db IIC Gb, Ex eb IIC Gb, Ex ta IIC Da
CODE OF PROTECTION	II 2G 1D, Ex db IIC Gb, Ex eb IIC Gb, Ex ta IIC Da	COMPLIANCE STANDARDS	EN 60079-0,1,7,31
COMPLIANCE STANDARDS	EN 60079-0,1,7,31	COMPLIANCE STANDARDS	IEC 60079-0,1,7,31
cCSAus CERTIFICATE	1055233	CODE OF PROTECTION	Class I Div 1 and 2, Groups A, B, C and D; IP66, 67, 68; Enclosure Type 4X; DIP A; Class I, Zone 1, AEx de II; Ex de II
CODE OF PROTECTION	Class I Div 1 and 2, Groups A, B, C and D; IP66, 67, 68; Enclosure Type 4X; DIP A; Class I, Zone 1, AEx de II; Ex de II	COMPLIANCE STANDARDS	C22.2 No. 0, 0.5, 30, 94; CAN/CSA 60079-0,1,2; UL 50, UL 1203; UL 60079 parts 0,1,7
COMPLIANCE STANDARDS	C22.2 No. 0, 0.5, 30, 94; CAN/CSA 60079-0,1,2; UL 50, UL 1203; UL 60079 parts 0,1,7	EAC CERTIFICATE	Check website for latest certificate number
EAC CERTIFICATE	Check website for latest certificate number	UKRSEPRO CERTIFICATE	CLJ 19.0370U
RETIE APPROVAL NUMBER	03866	CCOE / PESO (INDIA) CERTIFICATE	P444949
ECAS CERTIFICATE	20-02-05267	INMETRO APPROVAL	TUV 12.1331U
SANS	IA S-XPL21804 21.0012U	MARINE APPROVALS	LRS: 01/00173, ABS: 17-LD1619350-PDA
MARINE APPROVALS	LRS: 01/00173, ABS: 17-LD1619350-PDA		

HOW TO ORDER

e.g. 777 - D - A - M - 3 - M - 3 - 5

= Dual certified Ex d & Ex e - Type A - M25 (M) x M25 (F) - Nickel Plated Brass

Other thread variations are available on request. For further information on ordering please refer to www.cmp-products.com.

Please note that the Type B version of the 777 insulated adaptors are only certified Ex d when they are installed in conjunction with a corresponding CMP certified cable gland.

PRODUCT SELECTION TABLE

ORDERING REFERENCE TYPE A	ORDERING REFERENCE TYPE B	MALE THREAD SIZE 'A'	MINIMUM THREAD LENGTH 'E'	FEMALE THREAD SIZE 'B' (TYPE A)	FEMALE THREAD SIZE 'B' (TYPE B)	MINIMUM BORE DIAMETER 'C'	NOMINAL PROTRUSION LENGTH 'F' (TYPE A)	NOMINAL PROTRUSION LENGTH 'C' (TYPE B)	ACROSS FLATS 'D'	ACROSS CORNERS 'D'
777DAM2M2	777DBM2M2	M20 X 1.5	15.0	M20 X 1.5	M20 X 1.5	14.0	37.8	26.7	36.0	39.6
777DAM3M3	777DBM3M3	M25 X 1.5	15.0	M25 X 1.5	M25 X 1.5	20.0	38.5	27.2	46.0	50.6
777DAM4M4	777DBM4M4	M32 X 1.5	15.0	M32 X 1.5	M32 X 1.5	25.7	38.0	26.7	55.0	60.5
777DAM5M5	777DBM5M5	M40 X 1.5	15.0	M40 X 1.5	M40 X 1.5	32.1	38.0	26.7	70.0	77.0
777DAM6M6	777DBM6M6	M50 X 1.5	15.0	M50 X 1.5	M50 X 1.5	44.3	39.0	26.7	90.2	99.2
777DAM7M7	777DBM7M7	M63 X 1.5	15.0	M63 X 1.5	M63 X 1.5	55.0	49.5	26.7	100.0	110.0
777DAM8M8	777DBM8M8	M75 X 1.5	15.0	M75 X 1.5	M75 X 1.5	61.0	53.2	40.9	110.0	121.0
777DAM9M9	777DBM9M9	M90 X 2.0	24.0	M90 X 2.0	M90 X 2.0	80.6	57.0	47.2	123.2	135.5

All dimensions shown are in millimetres unless otherwise stated

Dimensions listed are for metric accessories only. Dimensions for alternative threads may vary.