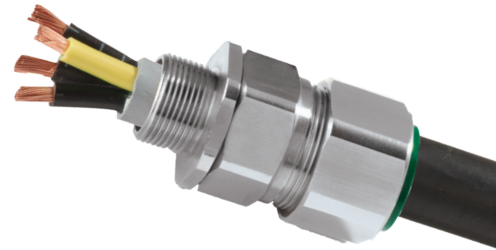


# CXe

## CXe INTERNATIONALLY APPROVED, Ex eb, EXPLOSIVE ATMOSPHERE CABLE GLAND

### FOR BRAIDED & STEEL TAPE ARMoured CABLES

- Metal-to-metal armour clamping
- Direct and remote installation
- Permanently crimped, low impedance earth termination
- Secure against self-loosening
- Controlled outer load retention seal
- Unique OSTG prevents overtightening
- -60°C to +130°C
- Internationally marked, UKEX, IECEx and ATEX
- Superior EMC performance

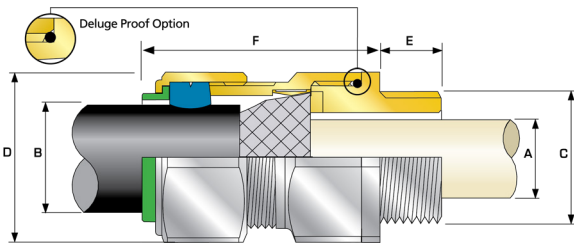


<b>IP66</b>	<b>IP67</b>	<b>IP68</b>
<b>EMC</b>		<b>+130°C</b> ↑ <b>-60°C</b>
<b>Ex eb</b>		<b>Ex ta</b>

TECHNICAL CLASSIFICATION	
DESIGN SPECIFICATION	BS 6121:Part 1:1989, IEC 62444, EN 62444
MECHANICAL CLASSIFICATION*	Impact = Level 8, Cable Anchorage = Type B
ENCLOSURE PROTECTION	IK10 to IEC 62262 (20 joules) Brass and Stainless Steel only
ELECTRICAL CLASSIFICATIONS*	Category B (Category A when used with braid, tape or pliable wire armour cables)
INGRESS PROTECTION RATING**	IP66 as standard (IP67, IP68*** available upon request)
CABLE TYPE	Wire Braid Armour (e.g. SWB), Screened Flexible (EMC) Wire Braid (e.g. CY / SY), Pliable Wire Armour (PWA), Steel Tape Armour (STA), Strip Armour (e.g. ASA)
SEAL MATERIAL	CMP SOLO LSF Halogen Free Thermoset Elastomer
SEALING TECHNIQUE	CMP Load Retention Seal
SEALING AREA(S)	Cable Outer Sheath
CABLE GLAND MATERIAL	Detachable Armour Cone and AnyWay Universal Clamping Ring

GLOBAL PRODUCT CERTIFICATION			
ATEX CERTIFICATE	CML18ATEX1323X	IECEx CERTIFICATE	IECEx CML 18.0180X
UKEX CERTIFICATE	CML 21UKEX1251X		
CODE OF PROTECTION	II 2G 1D, Ex eb IIC Gb, Ex ta IIIC Da	CODE OF PROTECTION	Ex eb IIC Gb, Ex ta IIIC Da
COMPLIANCE STANDARDS	EN 60079-0,7,31	COMPLIANCE STANDARDS	IEC 60079-0,7,31
EAC CERTIFICATE	RU C-GB. A. D07.B.0459422	UKr SEPRO CERTIFICATE	CLQ 19.0371X
ECAS CERTIFICATE	24-03-106290/E24-03-110155/NB007		
CCC CERTIFICATE	2020322313003285	INMETRO APPROVAL	TUV 12.0617X
RETIE APPROVAL NUMBER	EL-CS-220061	SANS	IA S-XPL21804 21.0009X
MARINE APPROVALS	LRS: LR22320739TA, DNV: TAE000000Y ABS: 21-2090433-PDA, BV: 43180		

\* Mechanical and Electrical Classifications applied as per IEC 62444 and EN 62444 \*\* When CMP installation accessories are used. Refer to www.cmp-products.com for further information.  
 \*\*\* IP68 tested to a minimum depth of 30 metres for 12 hours, alternative depths / durations can be provided upon request  
 Deluge Proof version available, ferrule colour coded white for ease of identification, please add 'D' after the product type.



\* Grooved Cone (X) is predominantly used for Wire Braid (e.g. GSWB, TCWB), Steel Tape Armour (STA, DSTA) and Aluminum Strip Armour (ASA) but is also suitable for Single Wire Armour (SWA), Aluminum Wire Armour (AWA) and Pliable Wire Armour (PWA) if the range is outside that of the Stepped Cone (W). Grooved Cone (X) dimensions shown in the Cable Gland Selection Table below are for a double wire strand of braid armour cables. Tapes can also be doubled over. For cables that have only a single layer of armour such as SWA the clamping range should be used as shown in the table below.

COMBINED ORDERING REFERENCE ("BRASS METRIC")			AVAILABLE ENTRY THREADS 'C'		CABLE BEDDING DIAMETER 'A'	OVERALL CABLE DIAMETER 'B'			ARMOUR RANGE* GROOVED CONE (X)		ACROSS FLATS 'D'	ACROSS CORNERS 'D'	PROTRUSION LENGTH 'F'	SHROUD	CABLE GLAND WEIGHT (kg)
SIZE	TYPE	ORDERING SUFFIX	METRIC	THREAD LENGTH (METRIC) 'E'	MAX	MIN	MAX	MIN	MAX	MAX	MAX				
20S16	CXE	1RA	M20	15.0	8.7	6.1	13.1	0.3	1.0	24.0	26.4	48.0	PVC04	0.10	
20S	CXE	1RA	M20	15.0	11.7	9.5	15.9	0.3	1.0	24.0	26.4	48.0	PVC04	0.10	
20	CXE	1RA	M20	15.0	14.0	12.5	20.9	0.4	1.0	30.5	33.6	48.0	PVC06	0.15	
25S	CXE	1RA	M25	15.0	20.0	14.0	22.0	0.4	1.2	37.5	41.3	56.0	PVC09	0.22	
25	CXE	1RA	M25	15.0	20.0	18.2	26.2	0.4	1.2	37.5	41.3	56.0	PVC09	0.22	
32	CXE	1RA	M32	15.0	26.0	23.7	33.9	0.4	1.2	46.0	50.6	54.0	PVC11	0.31	
40	CXE	1RA	M40	15.0	32.2	27.9	40.4	0.4	1.6	55.0	60.5	58.0	PVC15	0.45	
50S	CXE	1RA	M50	15.0	38.2	35.2	46.7	0.4	1.6	60.0	66.0	61.0	PVC18	0.57	
50	CXE	1RA	M50	15.0	44.1	40.4	53.0	0.6	1.6	70.1	77.1	60.0	PVC21	0.75	
63S	CXE	1RA	M63	15.0	50.0	45.6	59.4	0.6	1.6	75.0	82.5	74.0	PVC23	1.04	
63	CXE	1RA	M63	15.0	56.0	54.6	65.8	0.6	1.6	80.0	88.0	71.0	PVC25	1.02	
75S	CXE	1RA	M75	15.0	62.0	59.0	72.0	0.6	1.6	90.0	99.0	86.0	PVC28	1.79	
75	CXE	1RA	M75	15.0	64.2	66.7	78.4	0.6	1.6	100.0	110.0	82.0	PVC30	2.09	
90	CXE	1RA	M90	24.0	78.6	76.2	90.3	0.8	1.6	114.3	125.7	95.0	PVC32	3.04	
100	CXE	1RA	M100	24.0	91.0	86.1	101.4	0.8	1.6	123.0	135.3	95.0	LSF33	3.13	
115	CXE	1RA	M115	24.0	98.0	101.5	110.2	0.8	1.6	133.4	146.7	107.5	LSF34	4.48	
130	CXE	1RA	M130	24.0	115.0	110.2	123.2	0.8	1.6	152.4	167.6	110.0	LSF35	5.77	

\*For material options add the following suffix to the ordering reference; Brass (no suffix required), Nickel Plated Brass '5'; 316 Grade Stainless Steel '4'; Copper Free Aluminium '1'  
 For NPT options add the following digits to the material suffix; 1/2" = 31; 3/4" = 32; 1" = 33; 1 1/4" = 34; 1 1/2" = 35; 2" = 36; 2 1/2" = 37; 3" = 38; 3 1/2" = 39; 4" = 310 (Brass requires prefix '0')

Examples: 32CXE1RA534 = Nickel Plated Brass 1 1/4" NPT, 50SCXE1RA035 = Brass 1 1/2" NPT, 25CXE1RA432 = Stainless Steel 3/4" NPT, 20CXE1RA5 = Nickel Plated Brass M20

Dimensions are displayed in millimetres unless otherwise stated

Dimensions listed are for metric cable glands only. Dimensions for alternative threads may vary.